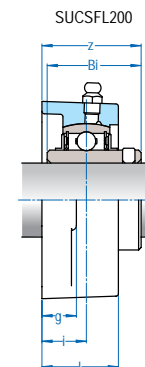
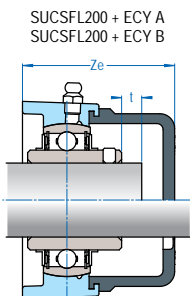
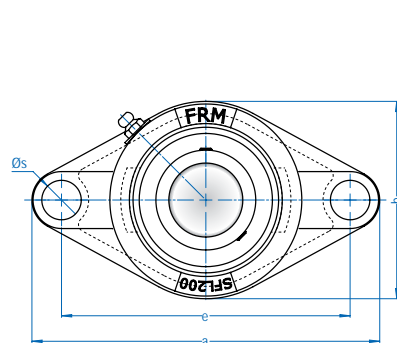


SFL 200

mancal em INOX
tipo FLANGE
serviço NORMAL



Caixa	Eixo		Dimensão nominal (mm)									Paraf.	Peso (kg) SUCSFL2	D	Rolamento SUC 200	
	Ø pol	Ø mm	a	e	i	g	l	s	b	t	Ze				z	Bi
SFL 204 ⁽¹⁾	3/4	20	111	90	15,0	11,0	25,5	12	60	2	47	M10 3/8	0,40	47,0	33,3	31,0
SFL 205 ⁽¹⁾	1	25	125	99	16,0	13,0	27,0	12	68	2	54	M10 3/8	0,60	52,0	35,8	34,1
SFL 206 ⁽¹⁾	1-1/8 1-3/16 1-1/4	30	141	117	18,0	13,0	31,0	16	80	2	62	M14 1/2	0,90	62,0	40,2	38,1
SFL 207 ⁽¹⁾	1-1/4 1-7/16	35	156	130	19,0	14,3	34,0	16	90	3	65	M14 1/2	1,30	72,0	44,4	42,9
SFL 208 ⁽¹⁾	1-1/2	40	171	144	21,0	14,3	36,0	16	100	3	71	M14 1/2	1,70	80,0	51,2	49,2
SFL 209 ⁽¹⁾	1-11/16 1-3/4	45	179	148	22,0	14,3	38,0	19	108	3	71	M16 5/8	2,00	85,0	52,2	49,2
SFL 210 ⁽¹⁾	2	50	189	157	22,0	15,1	40,0	19	115	3	75	M16 5/8	2,30	90,0	54,6	51,6
SFL 211 ⁽¹⁾	2 2-3/16	55	224	184	25,0	20,0	43,0	19	130	4	82	M16 5/8	3,50	100,0	58,4	55,6
SFL 212 ⁽¹⁾	2-7/16	60	250	202	29,0	20,0	48,0	23	140	4	89	M20 3/4	4,10	110,0	68,7	65,1
SFL 213		65	258	210	30,0	24,0	50,0	23	155	4	97	M20 3/4	5,00	120,0	69,7	65,1
SFL 214		70	265	216	31,0	24,0	54,0	23	160	4	99	M20 3/4	5,50	125,0	75,4	74,6
SFL 215	3	75	275	225	34,0	24,0	56,0	23	165	4	108	M20 3/4	6,20	130,0	78,5	77,8
SFL 216	3-3/16	80	290	233	34,0	24,0	58,0	25	180	4	109	M22 7/8	8,00	140,0	83,3	82,6
SFL 217	3-7/16	85	227	248	36,0	26,0	63,0	25	190	5	109	M22 7/8	9,10	150,0	87,6	85,7
SFL 218		90	320	265	40,0	26,0	68,0	25	205	5	114	M22 7/8	11,20	160,0	96,3	96,0

(1) - permite tampa TI mediante solicitação - ver descritivo técnico, 042 deste catálogo.