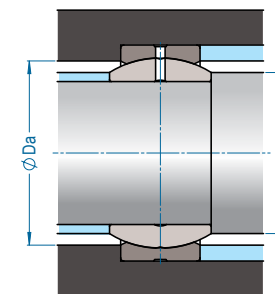
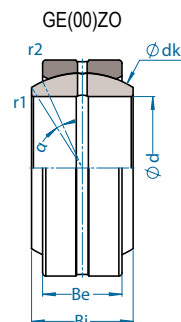
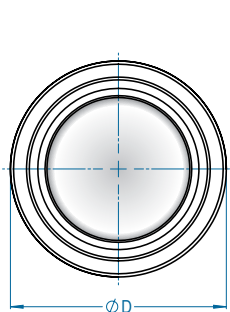


GE(00)ZO

serviço LEVE
eixo POLEGADA
contato AÇO/AÇO
RELUBRIFICÁVEL



GE(00)ZO
dimensões de montagem



Rolamento de rótula	Eixo (pol) d	Dimensão nominal (mm)						Dimensão de montagem (mm)		Peso (kg)	Cargas (kgf)		Folga radial interna CN	
		D	Bi	Be	dk	α	r1 (mín.)	r2 (mín.)	da (máx.)		Da (mín.)	dinâmica Cr		estática Cor
GE19ZO	3/4	31,750	16,662	14,275	27,5	6°	0,3	0,6	21,8	24,5	0,051	3202	9606	0,08 – 0,18
GE22ZO	7/8	36,513	19,431	16,662	32,0	6°	0,3	0,6	25,4	28,5	0,084	4344	12950	0,08 – 0,18
GE25ZO	1	41,275	22,225	19,050	35,5	6°	0,3	0,6	27,6	31,5	0,120	5517	16519	0,08 – 0,18
GE31ZO	1-1/4	50,800	27,762	23,800	45,5	6°	0,6	0,6	36,0	40,5	0,220	8831	26411	0,08 – 0,18
GE34ZO	1-3/8	55,563	30,150	26,187	49,0	6°	0,6	1,0	38,6	43,5	0,290	10401	31305	0,08 – 0,18
GE38ZO	1-1/2	61,913	33,325	28,575	53,0	6°	0,6	1,0	41,2	46,5	0,400	12339	37016	0,08 – 0,18
GE44ZO	1-3/4	71,438	38,887	33,325	63,9	6°	0,6	1,0	50,7	57,0	0,620	17335	52108	0,08 – 0,18
GE50ZO	2	80,963	44,450	38,100	73,0	6°	0,6	1,0	57,9	65,0	0,920	22638	68015	0,08 – 0,18
GE57ZO	2-1/4	90,488	50,013	42,850	82,0	6°	0,6	1,0	64,9	73,0	1,600	28654	85962	0,10 – 0,20
GE63ZO	2-1/2	100,013	55,550	47,625	92,0	6°	1,0	1,0	73,3	82,0	1,700	35690	107071	0,10 – 0,20
GE69ZO	2-3/4	111,125	61,112	52,375	100,0	6°	1,0	1,0	79,1	89,0	2,300	42726	127465	0,10 – 0,20
GE76ZO	3	120,650	66,675	57,150	109,5	6°	1,0	1,0	86,8	98,0	3,000	50986	152958	0,10 – 0,20