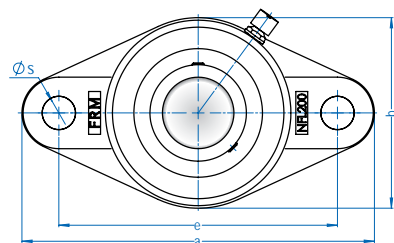
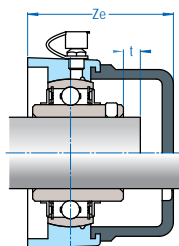


NFL 200

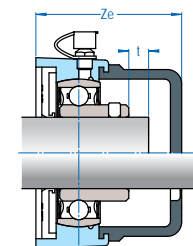
mancal em PBT
tipo FLANGE
serviço LEVE



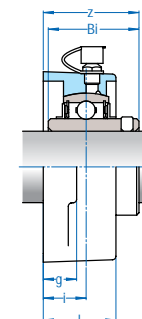
SUCNFL200 + EPDM A
SUCNFL200 + EPDM B



SSBNFL200 + EPDM A + TI
SSBNFL200 + EPDM B + TI



SUCNFL200



Caixa	Eixo		Dimensão nominal (mm)									Paraf.	Peso (kg)		D	Rolamento SUC 200	
	Ø pol	Ø mm	a	e	i	g	l	s	b	t	Ze		SUCNFL2	SUCNFL2 EPDM A(B)		z	Bi
NFL 204	3/4	20	113	90	15,0	13,0	26,5	11	65	2	49	M10 3/8	0,25	0,30	47,0	33,3	31,0
NFL 205	1	25	130	99	16,5	14,5	28,0	11	70	2	55	M10 3/8	0,30	0,35	52,0	36,3	34,1
NFL 206	1-1/8 1-3/16 1-1/4	30	148	117	18,0	14,0	30,5	11	80	2	61	M10 7/16	0,45	0,50	62,0	40,2	38,1
NFL 207	1-1/4 1-7/16	35	164	130	19,0	16,1	32,0	13	90	3	63	M12 1/2	0,70	0,75	72,0	44,4	42,9
NFL 208	1-1/2	40	176	144	21,5	19,0	35,0	14	100	3	70	M12 1/2	0,90	0,95	80,0	51,7	49,2
NFL 209	1-11/16 1-3/4	45	189	149	24,0	22,0	41,0	17	108	3	74	M14 5/8	1,00	1,10	85,0	54,2	49,2
NFL 210	2	50	197	157	25,0	22,0	41,0	17	115	3	76	M14 5/8	1,10	1,20	90,0	57,6	51,6